

What happens after you flush?

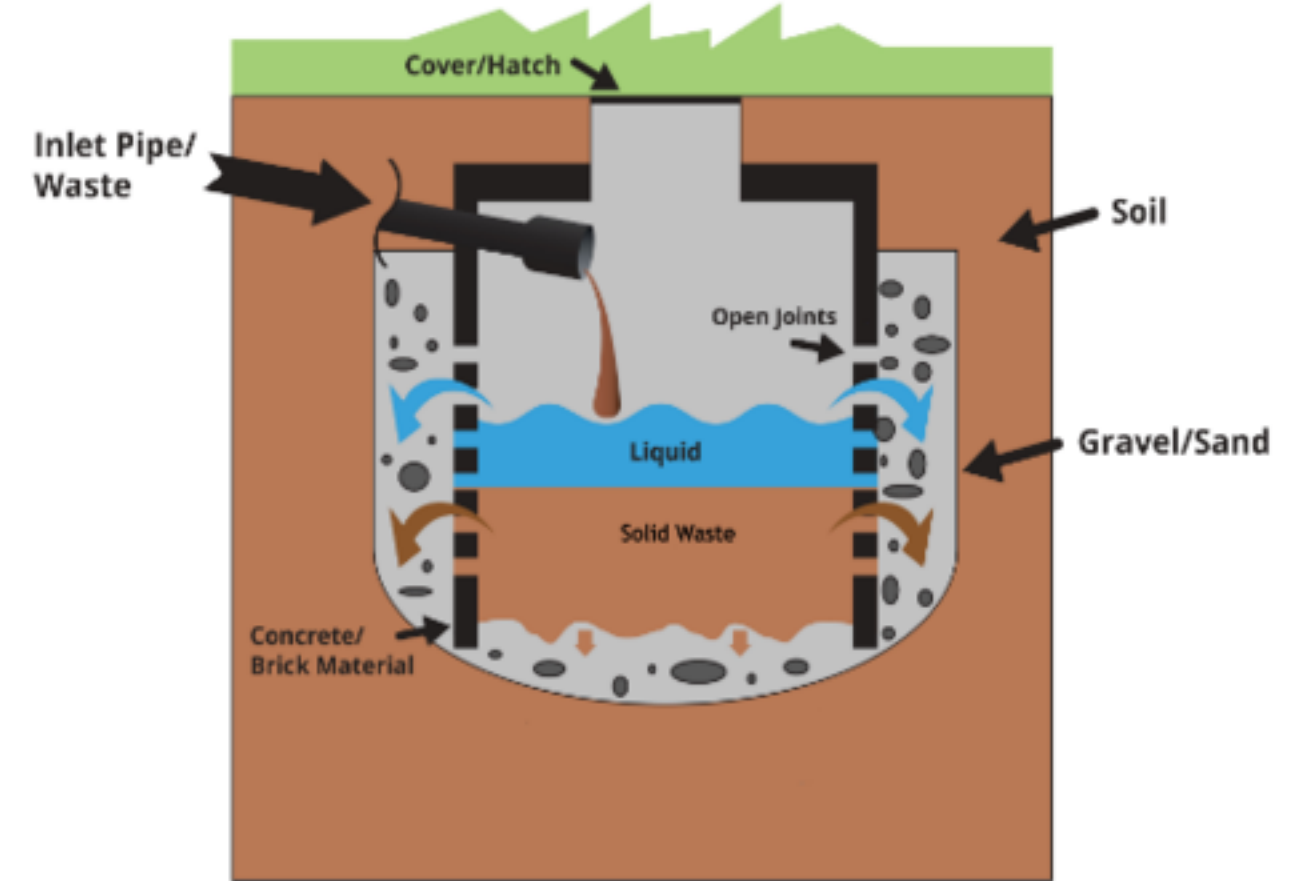


If you have a cesspool, you could be harming the environment

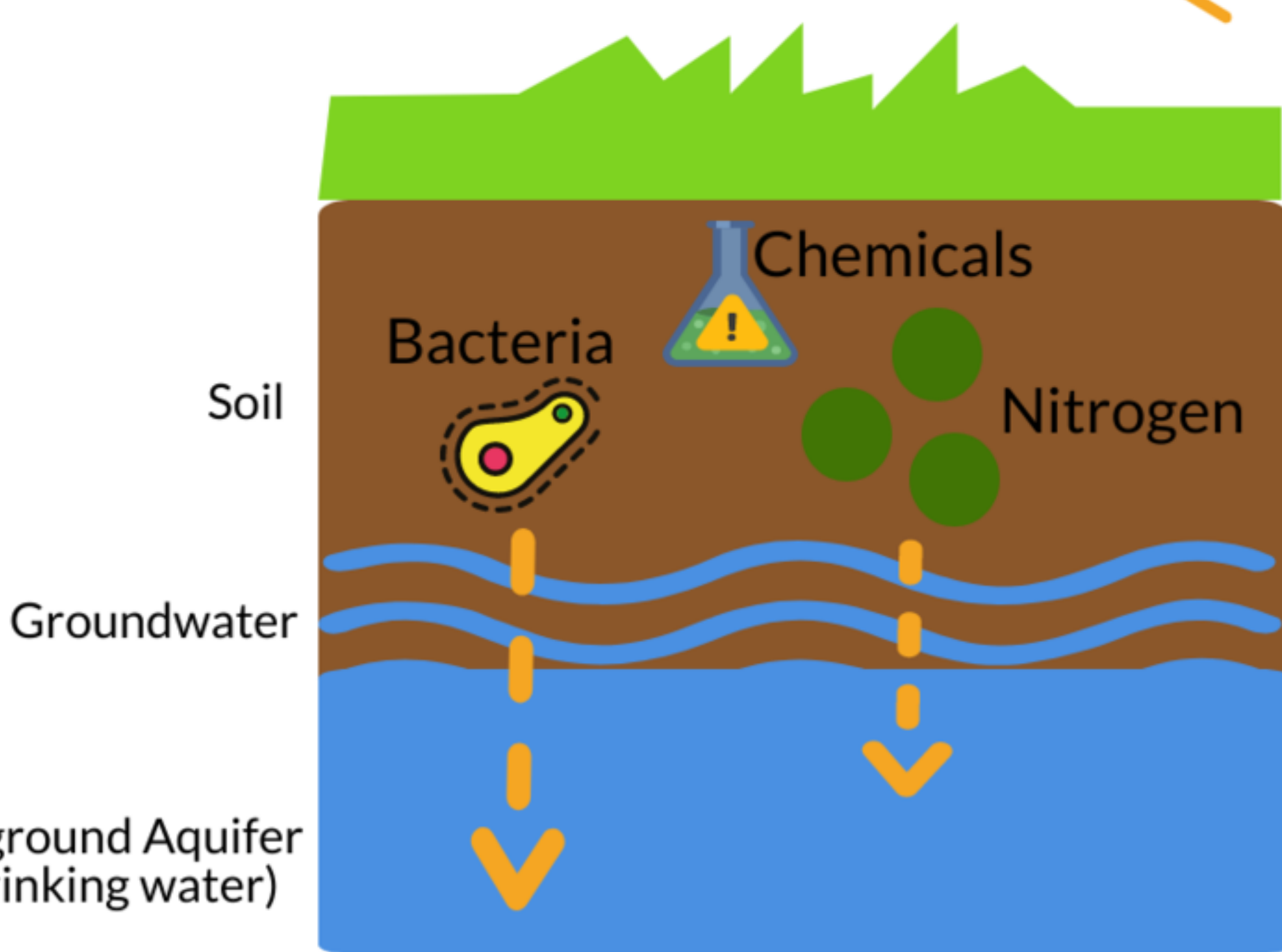


Untreated sewage from homes with cesspools can leak into the ground and nearby waters

Cross Section of a Cesspool



Cesspools are basically a hole to store waste and provide no primary treatment of sewage which enters the soils below.



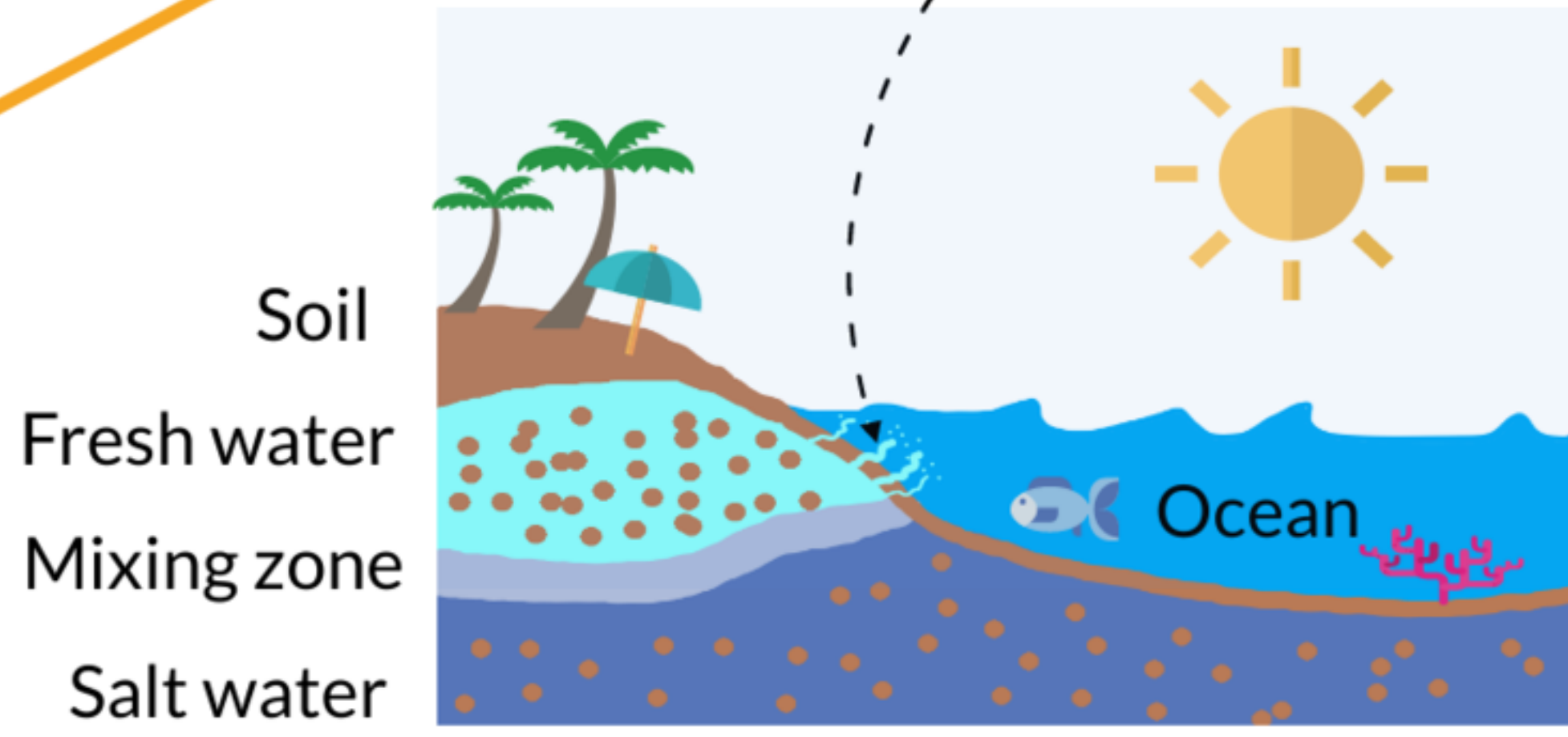
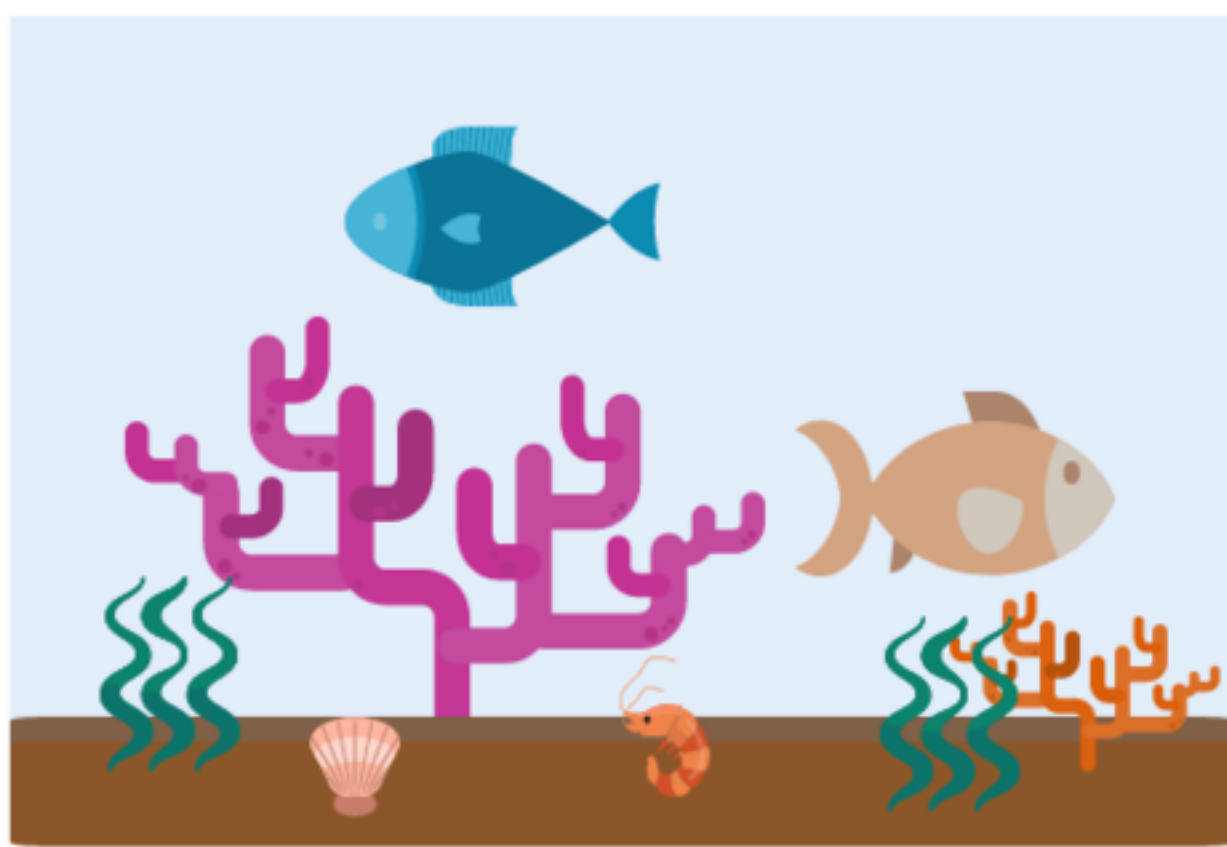
That's a problem because bacteria, chemicals, and nutrients -like nitrogen- can leak into our groundwater

Because we live on an island, we rely on underground aquifers for drinking water



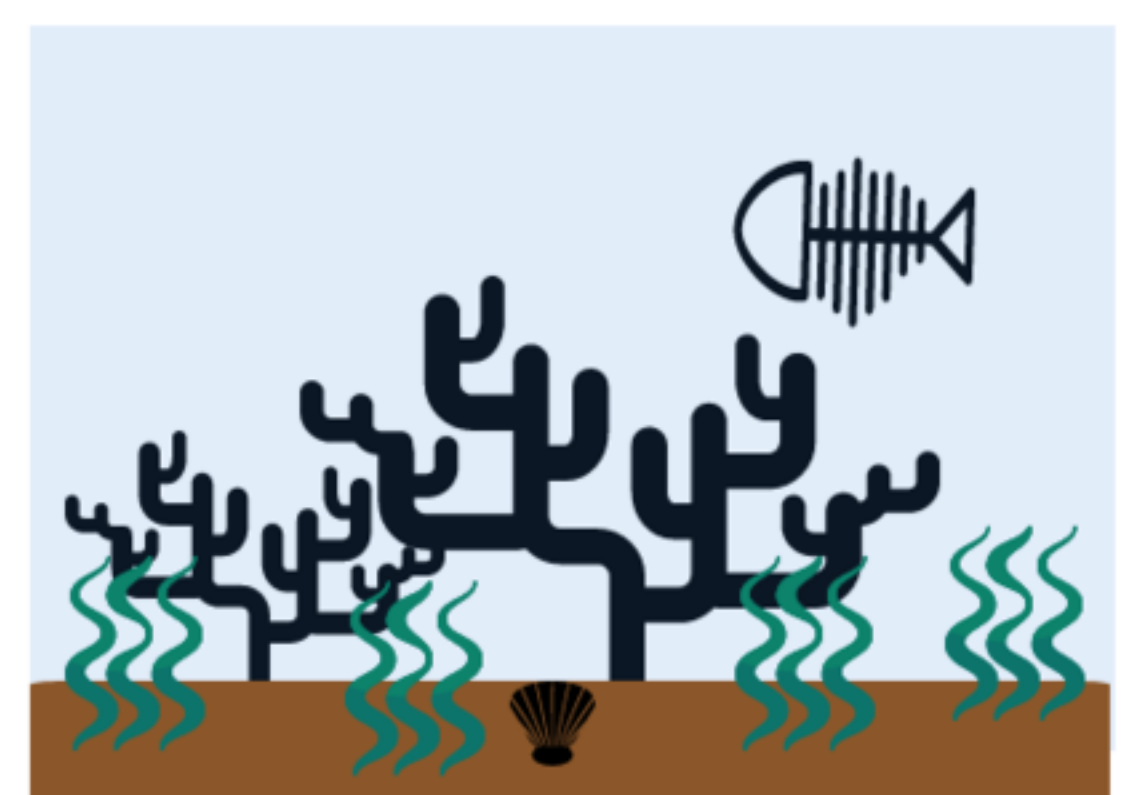
But, the groundwater is also connected to the ocean, through something called **submarine groundwater discharge**

That means that pollution from cesspools containing chemicals and nutrients can be carried to coral reefs by this water



This can lead to coral death, algae overgrowth, and human health concerns when swimming or surfing in the ocean

Brought to you by:



powered by

PIKTOCHART